



New metric tapped balls allow use with Extension Tubes and Spray Tips.

BlackEye™



Available with tapped ball to allow quick plugging!

SCREW-LOCK COOLANT NOZZLE FOR CNC LATHES

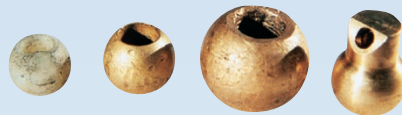
- An easy-to-aim replacement for screw-lock spherical coolant nozzles.
- Rated to 150 psi (10 bar) maximum
- Sizes available to fit almost every machine or toolholder.
- Just install and tighten lock-screw once, then aim the stainless steel ball with the tip of your allen wrench.
- Choose tapped balls if your toolholders have multiple ports that occasionally need plugging (setscrew included).

DIMENSIONS IN INCHES (except as noted)

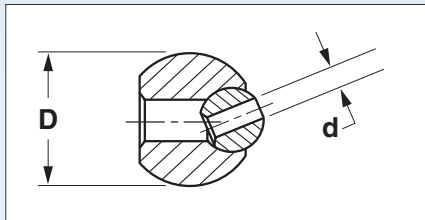
Part No.	Nom. Dia. "D"	Orifice Dia. "d"	Pkg Qty
BE00112	10 mm	.11	5
BE00210	10 mm	#6-32 UNC	5
BE00212	10 mm	M3.5 x .6	5
BE00107	12 mm	.16	5
BE00220	12 mm	#8-32 UNC	5
BE00222	12 mm	M4 x .7	5
BE00108	14 mm	.16	5
BE00230	14 mm	#8-32 UNC	5
BE00232	14 mm	M4 x .7	5
BE00109	15 mm	.16	5
BE00240	15 mm	#8-32 UNC	5
BE00242	15 mm	M4 x .7	5
BE02020	18 mm	.16	5
BE02030	18 mm	#10-32 UNF	5
BE02032	18 mm	M5 x .8	5
BE00110	22 mm	.22	5
BE00250	22 mm	1/4-28 UNF	5
BE00252	22 mm	M6 x 1.0	5
BE00120	3/8 inch	.11	5
BE00260	3/8 inch	#6-32 UNC	5
BE00262	3/8 inch	M3.5 x .6	5
BE00111	1/2 inch	.16	5
BE00270	1/2 inch	#8-32 UNC	5
BE00272	1/2 inch	M4 x .7	5
BE02010	5/8 inch	.16	5
BE00280	5/8 inch	#8-32 UNC	5
BE00282	5/8 inch	M4 x .7	5

BlackEye™

Nozzles replace these:



BlackEyes shown in boring bar holder.



Material: Body - Acetal
Ball - Stainless Steel
Max Operating Temperature: 160° F
Maximum Pressure: 150 PSI (10 bar)



BlackEye installed on quick change turning tool.

Ordering Information: Measure the diameter of the original ball in your machine and order the nominal diameter to suit.